



# Risk Management Plan Key Actions for 2022

## Adults, Children and Families



Conducting Service Evaluations in all programs in 2022.



Discussing risk at each annual planning meeting.

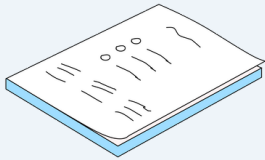


Developing the Accessibility and Diversity Plan for the Association.



Implementing MyCompass and SharePoint.

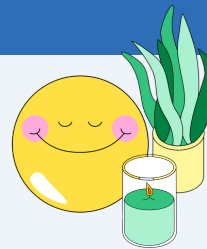
## BACI Employees



Conducting violence in the workplace risk assessments.



Organizational review from a Justice, Disability, Equity and Inclusion lens.

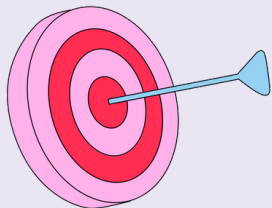


Wellness plan of action including an on-going evaluation framework. The plan will be developed with staff.



Creation of the Intersectionality Club for employees by employees.

## Board of Directors



5 years Strategic plan in place for 2022-2027.

## Volunteers



Providing orientation and training to all volunteers.

## Community Members



Recording and reviewing compliments and concerns and following up.

## Financial Practice



A plan of actions to address and implement the recommendations from the 2021/2022 Audit.

## Property and Assets: Buildings



Options for Still Creek building

## Property and Assets: Vehicles



A plan of action to address winter road conditions is in place.

## Fundraising Events - Social enterprise



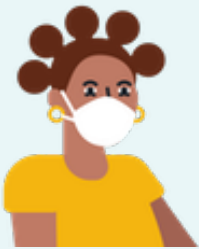
On-going fundraising strategies are in place.

## Contract Liability

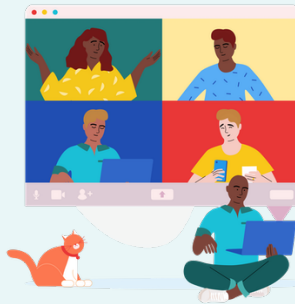


Completing BACI's Outcomes Measurement Report for 2021

## COVID-19 Pandemic



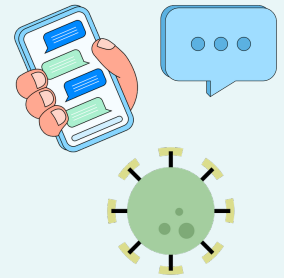
Restart Action Plan for all departments is in place.



Providing services and supports via virtual platforms.

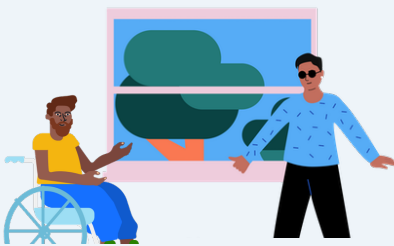


Procedure in place for employees working from home.

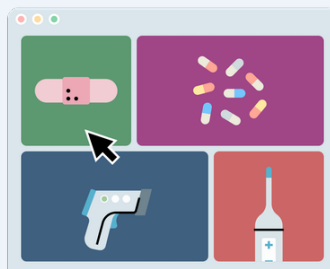


BACI will provide training and resources related to Covid-19 and mental health.

## Health and Safety



OSH Committee addresses current workplace issues as well as develops and implements an annual action plan.



BACI has key policies and procedures related to the health and safety of persons served and employees.

**Find more information and details in the full report.**

Art from blush.design by [Bonnie Kate Wolf](#), [Mariana Gonzalez Vega](#) and [Leni Kauffman](#)

